

IMPACT REPORT



Christian Care
Communities
Since 1884

*Enhancing the Journey
of Life for Older Adults*

Mission

Christian Care Communities enhances the journey of life for Older Adults.



We Care Values

In response to the call of Jesus Christ, we

Work with compassion for Older Adults and their families.

Embrace aging as a valued part of life.

Care for all the needs of those we serve.

Always seek ways to improve and grow.

Respect the dignity of each person.

Exemplify integrity, excellence, and accountability.

\$1.2 million
in volunteer hours
served annually



Printed November 2019

FastFacts

1 in Kentucky

Kentucky's largest faith-inspired non-profit provider of affordable housing, skilled nursing, long term care, and adult day centers specializing in dementia care

9 Locations

across the state



5000+ Elders

and families served annually by our quality care and housing



800 Employees

dedicated staff statewide



Christian Care Statewide Profile



1053

Residential Apartments



209

Garden Homes



601

Nursing & Personal Care Residents



151

Memory Care Residents



70

Adult Day Centers Daily Participants



10

Chaplains

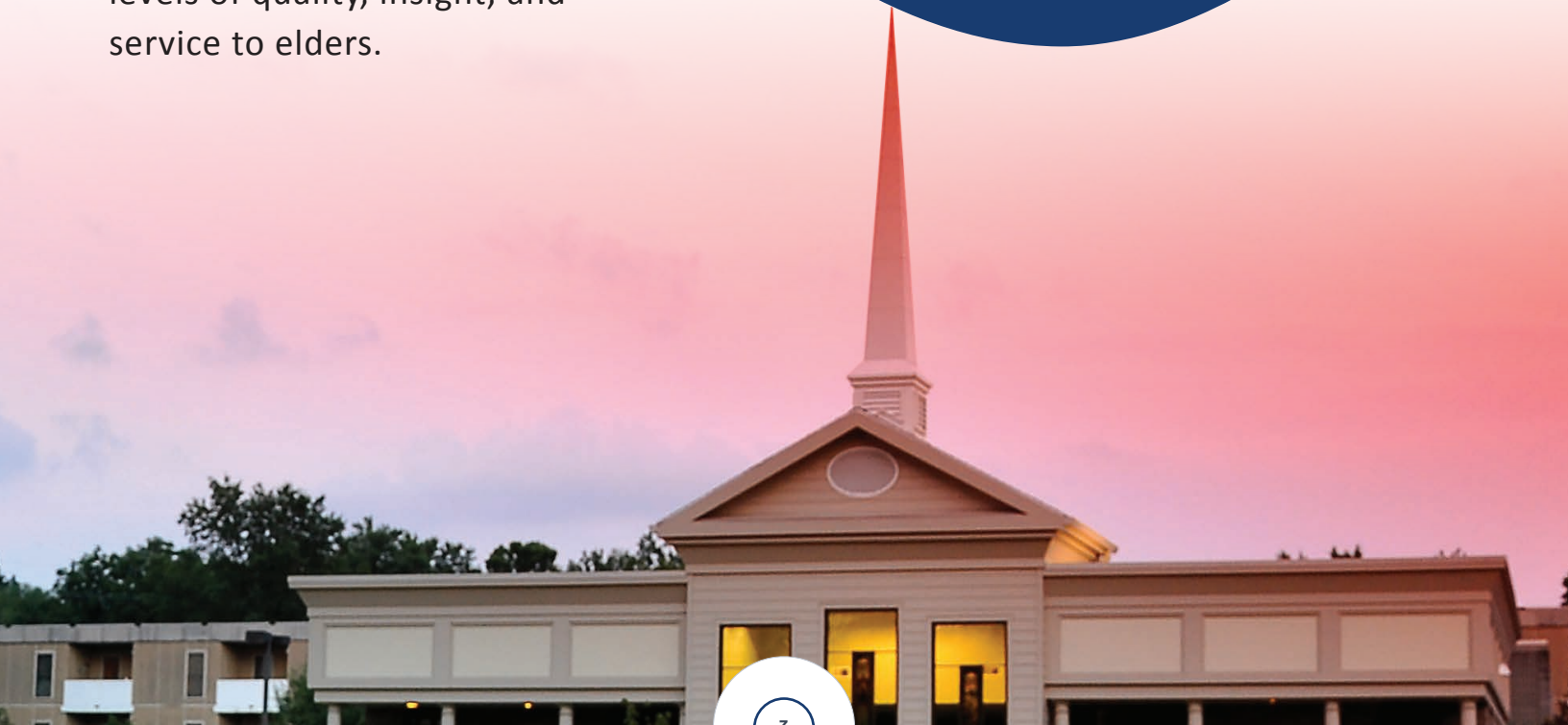


92,000+

Annual Volunteer Hours

Faith.
Care.
Family.

Our focus on *Faith Care Family* brings our community energy and direction to support our seniors and help us reach new levels of quality, insight, and service to elders.



Awards & Recognition



Mary Lynn Spalding, President and CEO of Christian Care Communities, honored by Louisville Mayor, Greg Fischer, at the **Commitment to Compassionate Care Awards** luncheon from Insider Louisville.



Heather O'Banion
Outstanding Administrator Award
LeadingAge Kentucky
Christian Health Center Bowling Green



John Rodgers
Supportive Services Award
LeadingAge Kentucky
Christian Health Center Louisville



Bill Collins
Outstanding Administrator Award
LeadingAge Kentucky
Christian Health Center Corbin



Frank Farris
Governance Leadership Award
LeadingAge Kentucky
Christian Care Communities Board Member

WELL-AT-WORK



Well-at-Work is a comprehensive wellness program available to all Christian Care employees. Employees have opportunities throughout the year to participate in Well-Challenges, attend education workshops, work with health coaches, engage with LifeWorks solutions, and more.



“ We understand choosing a career path involves many factors. Christian Care strives to offer meaningful work and engagement to recruit and retain the best employees. ”



Nathan Durret - Workplace Health & Wellness Specialist

FAITH CARE FAMILY

Spiritual Care and Chapel Dedication



Our community in Bowling Green celebrated the dedication of a new chapel in Bridgepointe at Village Manor. The Chapel was named the M. Susan Jones Chapel and Education Center, in honor of a longstanding board member and advocate for senior care, nursing and education. From the high ceiling to the beautiful stained glass windows, the space is a symbol of Christian Care's dedication to the mission of serving the spiritual needs of elders and offers a dedicated place for worship, scripture studies, support groups, family celebrations, staff training and intergenerational activities.

"It will be a place where our legacy and faith-filled heritage are remembered regularly by our community," commented Mary Lynn Spalding, President and CEO of Christian Care Communities.

Susan Jones and her husband, Gordon, were joined by family at the chapel dedication service, highlighting the family's commitment to the Bowling Green community.



Renovations for Louisville's Chapel and Dementia Care



With a gift from Crestwood Christian Church in Lexington, the Chapel at Louisville's Health Center was renovated by volunteers and includes a new high-tech sound system to improve the worship experience and community engagement for residents.

Friends 'N Stitches

For over 15 years the Friends 'N Stitches group at Southeast Christian Church has made lap quilts, walker buddies, pillow cases, tea towels, and other gift items for Elders at the Christian Health Center. With an estimated 4,000 donated items, this amounts to approximately 16,000 volunteer hours.



FAITH **CARE** FAMILY

iN2L Technology & Sensory Rooms support Elders and families



Two Health Centers – Louisville and Hopkinsville – benefited from a \$110,000 Kentucky CMP Fund grant for state-of-the-art technology that will be used in the newly renovated Care & Connect Training Centers. Special thanks to First United Methodist Church of Hopkinsville for the volunteers who helped enhance the Center!

In addition, Village Manor of Bowling Green was successful in partnering with the Home Instead Foundation. This “dollar match” fundraiser supported a new Sensory Room for residents with Alzheimer’s and dementia. This project compliments the Best Friends™ Approach to dementia care which is used statewide at Christian Care.

Best Friends™ 35th Anniversary in Nicholasville

A celebration of the tens of thousands of seniors and families who have benefited from Virginia Bell’s creation of the Best Friends™ Approach to Alzheimer’s disease and dementia was celebrated at the Best Friends™ Center. Friends, family, staff and elders gathered in recognition of the time, talent and treasure that so many have dedicated to the success of this program.



Visit ChristianCareCommunities.org/Give to share your gift today!

The Meadow in Louisville’s Christian Health Center



Seniors with Alzheimer’s disease and dementia reside safely in The Meadow which was recently renovated by volunteers from AEL Span Corporation. A gift from Southeast Christian Church supported a new outdoor walking garden with fountain and covered patio, kitchen, activities room, spa and nurses station renovation - all marvelous additions for our elders and their families.

FAITH CARE **FAMILY**

Gold Standard Award for Optimal Aging

Don and Patsy Hall, residents in Louisville, are both 88 years old and have been married for 53 years. They received the Gold Standard for Optimal Aging sponsored by the University of Louisville for their service to Kentucky as a couple, including senior meals delivery, hosting card parties to keep residents engaged, and many years of selfless projects. The Award was presented at a luncheon at the Crowne Plaza Hotel hosted by radio personality, Wayne Perkey.



Visit us on Facebook to view and share photos!

Intergenerational program thrives with Congressional Award for Youth



Christian Care sponsored the largest gold medalist class for the state of Kentucky in 2019. We are actively training our youth to be leaders in senior care.

Christian Care's staff and elders are mentoring dozens of youth across the state who are earning their Congressional Award Gold Medal. As the only program of its type in America, this unique program produced 8 Gold Medalists this year, the largest in the history of Kentucky. With 11 total Gold Medalists since the inception of the program in 2016, youth are introduced to career paths at Christian Care and are mentored in the areas of community service, physical fitness, personal development and civic exploration.

Volunteer of the Year

Linda Arnett of Grayson KY received the "Volunteer of the Year" Award for 25 years of meeting weekly with elders who needed help with their banking, paying bills, and more. Linda ensured hundreds of residents had the resources and knowledge they needed to live a life of dignity and enjoyment.



Grateful Families Honor Staff in Corbin



Oscar is **grateful** and
his story is **inspiring!**

Visit ChristianCareCommunities.org/Grateful to see Oscar's story.

Grateful Family and Resident Program

Residents and families are extremely grateful for the care our staff provides and often ask, "is there something I can do to show you my sincere thanks?"

The Grateful Family and Resident Program provides an opportunity to make a donation in honor of a caregiver at Christian Care and designate the funds to support various areas including spiritual care, education, and an employee emergency fund. Dozens of families have participated in honoring the care received from our dedicated and wonderful staff.

ENGAGING LEADERSHIP

UPS and First Christian Church of Louisville provide volunteers and a grant

Employees of United Parcel Service and members of First Christian Church of Louisville focused on renovating Louisville's new *Care & Connect Training Center* in order to educate staff about Christian Care's approach to caring for Elders. The new Center offers state-of-the-art training modules, classroom space, clinical engagement and a teleconferencing suite.



135 YEARS
1884 / 2019
Christian Care
Communities

“Every gift you make leads to enhancing the journey of life for Elders and their families.”

Jim Patton, LL.M., M.Div.
Vice President of Mission Advancement
and General Counsel



Visit ChristianCareCommunities.org/Give to share your gift today!

With Gratitude

BOARD OF DIRECTORS

Alan C. Parsons, *Chair*

Jane Burks, *Vice Chair/ Treasurer*

Jill Bell, *Secretary*

Tracey Clark

Frank Farris

Terri Fowler, DVM

Sarah Fulks, M.D.

Chad Gardner

Joe Hatchett

Jennifer Hughes

Susan Jones

Bruce Lucas, M.D.

Martin McKinney

Skipper Martin

David Stanley

Nancy Steele

Tanya J. Tyler

Katie Ising West

Lelan Woodmansee

COMMITTEE MEMBERS

Debra Walton

Linda McGinity-Jackson

Gary Bensing

Bill Nunery, M.D., FACS

A Message from Our President & CEO

Each day, thousands of elders, families, staff and volunteers are touched by the generosity of others. To the individuals and organizations who have donated their time, talents, and treasures, I thank you for your continued support. We are enhancing the journey of life for older adults! Together, we're spreading Faith – Care – Family and making a world of difference in the lives of others.



Mary Lynn Spalding
President & CEO

*“May the Lord reward you
for your kindness”*

Ruth 1:8

From our Chair of The Board of Directors

On behalf of the Board of Directors and with a very grateful heart, I thank all our friends at Christian Care Communities who have contributed financially to our commitment to Elder care. Like many other not-for-profit providers of senior housing and health services, Christian Care Communities has been challenged by labor shortages, rising costs and relatively flat government reimbursement. Through it all, we take great pride in our Chaplaincy program, providing the distinctively Christian care that gives meaning to our name. Each year we devote more than \$400,000 to our Spiritual Care program, which is entirely unreimbursed by government funding sources. Thus, your contributions are absolutely critical to our continued ability to offer faith-based services to a very vulnerable and fragile population. If you haven't already done so, I hope you will join me and others by including Christian Care Communities in your giving and estate planning as well. It's a wonderful legacy to consider! For all that you do for Christian Care, thank you and God Bless.



Alan C. Parsons
Chair, Board of Directors

Founders Week

Annually in October we dedicate a week-long celebration of our heritage and the legacy of our Founders, Reverend William Broadhurst and his wife, Mildred.

Our mission is to enhance the journey of life for Older Adults.

Christian Care Communities is Kentucky's largest faith-inspired, non-profit provider of affordable senior living and long-term care for Older Adults. Founded in Louisville in 1884, today Christian Care serves over 5,000 elders annually through an extensive network of senior communities and programs.

Our Founders Week "Broadhurst Beard Contest" is a statewide favorite!

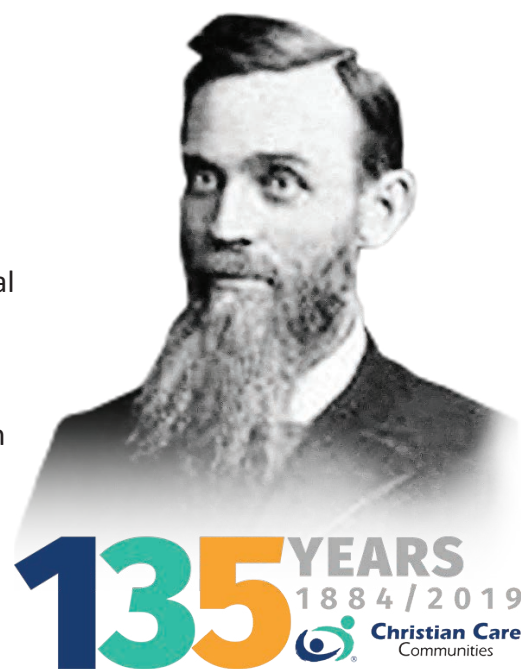


“Our commitment to Chaplains distinguishes our organization from other senior living communities.”

James W. “Jim” Patton, LL.M., M.Div., FCEP

Spiritual care is the cornerstone of our foundation. In recent years, medical researchers have proven what Christian Care has known for more than a century – an active spiritual life enhances physical, mental and emotional health. Continued engagement in spiritual celebrations increases well-being and eases life transitions. In addition, each community benefits from a chaplain who brings spiritual support and compassion to residents and families as they journey through blessings and challenges. The chaplaincy program is funded through individual donations and church giving.

We also have extensive church and community outreach programs to support initiatives, donations and volunteerism.



Founder, Rev. William A. Broadhurst



Christian Care Communities

Since 1884

Enhancing the journey of life throughout Kentucky with nine locations offering affordable senior living and support services.



Visit all of our communities online at
ChristianCareCommunities.com

**THE HOMEPLACE
AT MIDWAY**
A GREEN HOUSE® RESIDENCE



Village Manor

Bridgepointe
at Ashgrove Woods

Best Friends™
Adult Day Center

For a personalized tour, call
1.800.662.1738

Guided by Accountable Stewardship

"Accountability, Stewardship and Responsibility – these are the top three factors influencing philanthropic decisions at Christian Care. Our team supports a vibrant advancement and donor relations program, fostering a credible financial picture and plan for effective and ethical management. Donor satisfaction and heartfelt testimonials are constant hallmarks of our mission. If you would like to learn more about stewardship, fund development and accountability, please contact me at (502) 254-4200. I'd like to get to know you."



*James W. "Jim" Patton, LL.M., M.Div., FCEP
Vice President of Mission Advancement
and General Counsel*

CONTACT US

📍 12710 Townepark Way
Louisville, Kentucky 40243

☎ 800.662.1738 | 502.254.4200

f ChristianCareCommunities